

MONTANA SCHOOL  
for the Deaf & the Blind

# Visually Impaired Enrichment Weekend

Montana School for the Deaf and the Blind Outreach invites you to:

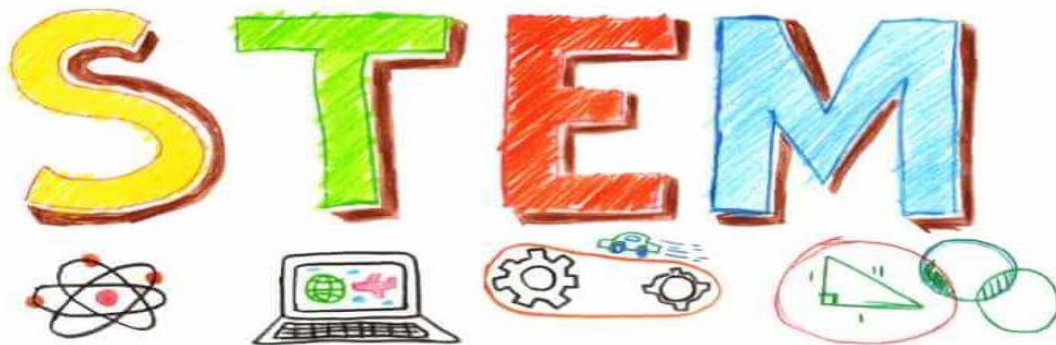
Rescheduled VIRTUAL EVENT

January 28 - 29, 2022

FRIDAY 6:00 pm TO 8:00 pm

SATURDAY 9:30 am – 2:30 pm

## FEATURING:



SCIENCE, TECHNOLOGY, ENGINEERING, MATH

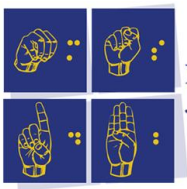
## Agenda:

### Friday

- 6:00-7:30 - What is it? and Yoga Flow

### Saturday

- 9:30-10:30 - APH Science or Snap Circuits (first 10 registrants)
- 10:30-11:30 - APH presentation Code Jumper or Snap Circuits
  - 11:30-Noon - NWABA Movement Fun
  - 12:00 -12:30 - Montana Dog Guide Group
    - 12:30 - 1:00 Lunch/social time
    - 1:00-1:30 - Math and Coding Games
- 1:30 - 2:30 - Break out into various eye conditions with adult mentors
  - 2:30 - Closing and evaluations



MONTANA SCHOOL  
for the Deaf & the Blind

## Visually Impaired Enrichment Weekend

Google registration form can be completed here:

<https://forms.gle/oBGqpGm2aRpnW7pL7> OR call your consultant to help you complete it over the phone. **Registration deadline: January 10, 2022**

**\*\* If you previously registered for the November event no need to re-register, but if you registered and can no longer attend the January event please contact your outreach consultant to cancel registration. \*\***