

# The MSDB Cottage Bulletin

September 2022  
Vol. 2, No. 1

## Message from the Director

By Jim Kelly II

The 2022-2023 school year has begun, and we are already at the first travel home weekend. Last year the counselors put together this newsletter and the feedback was very positive. We will continue to share with you information about what your child has been doing, opportunities to get to know some of the staff and just to keep you in the loop. Our cottage population has been increasing. We will continue to provide your child with positive, safe and enriching activities within their "home away from home"! Hope you enjoy reading the stories in this newsletter.

## LEAP REPORT

**a·dult**

/əˈdʌlt, ˈad, əlt/

Verb **INFORMAL**

1. behave in a way characteristic of a responsible adult, especially by accomplishing mundane but necessary tasks.

Hello from LEAP!

For those of you who don't know us, LEAP stands for (independent) Living, Employment, Academic Planning program. We teach 18-21 year old graduates with hearing or vision loss how to adult. Participants of this program reside in Glacier cottages on MSDB's campus. They are expected to work, maintain a budget, set goals, participate in volunteer opportunities and community involvement, as well as participate in training regarding adult living.

This is our second year and we have six participants starting out. Four of the participants have low vision and the remaining two are deaf/hard-of-hearing. This group is a little different from last year as we have far more extroverts! As we work to get work experiences, training, and spaces set up our participants can be found hanging out in the activity room, using public transportation to go around town, playing games with one another, working on their chores, cooking, reading, and so much more. So far we have had one-on-one training with participants regarding a variety of subjects. We have also had training on take-away coffee vs. meals and coffee at home. We looked at the cost analysis of a \$5 coffee and how much could be purchased and how many meals it would make. All of our participants were surprised by how much they could purchase at the store for \$5. We hope this will help with their budgeting!

So far we are in our third week of LEAP, and we are working hard to get work experiences set up and goal planning completed. We look forward to sharing more of our program and year with you all!

Carrie and Mackenzie

For more information regarding LEAP please use the QR code provided to access our Handbook.



SCAN ME

# INTRODUCING THE COTTAGE STAFF

**The Cottage Program is very lucky to have experienced staff. Many have been with MSDB for over 10, 20, even 40 years! Below you will find the staff names, years at MSDB and their job title in the different departments and wings of the cottage.**

## STUDENT LIFE

In addition to the different wings and department in the cottage, there are various staff that keep the ship running.

Jim Kelly	Director	39 years
Fay Schwieger	Secretary	4 years
Erin Faulkner	Counselor	3 years
(former DHH teacher for 3 years 1996-1999)		
Cheri Luongo	Counselor	7 years
Terri Knotts	Housekeeping	New
(former cook/baker for 18 years)		
Diane Moog	ASL Mentor	1 year
(retired MSDB Teacher of more than 25 years)		

## HEALTH SERVICES

The Infirmary staff are available on site or on-call 24/7. They dispense medications, assess illnesses and provide first aid to our students and staff.

Diane Eddy	Director	21 years
Tami Kelly	LPN	34 years
Carol Sabo	LPN	11 years
Autumn Harvey	LPN	New
Vicky Jo Reeves	Sub LPN	

## KITCHEN

The kitchen staff provides food for students and staff to cook for breakfast, full buffet style meals for weekday lunches and fully prepared meals for the cottages for dinners and weekend lunches. They also prepare snacks and meals for various functions on campus.

Bobbi Fritz	Cook 3	4 years
Mo Aguon	Cook 2	6 years
Juan Spigner	Prep Cook	New

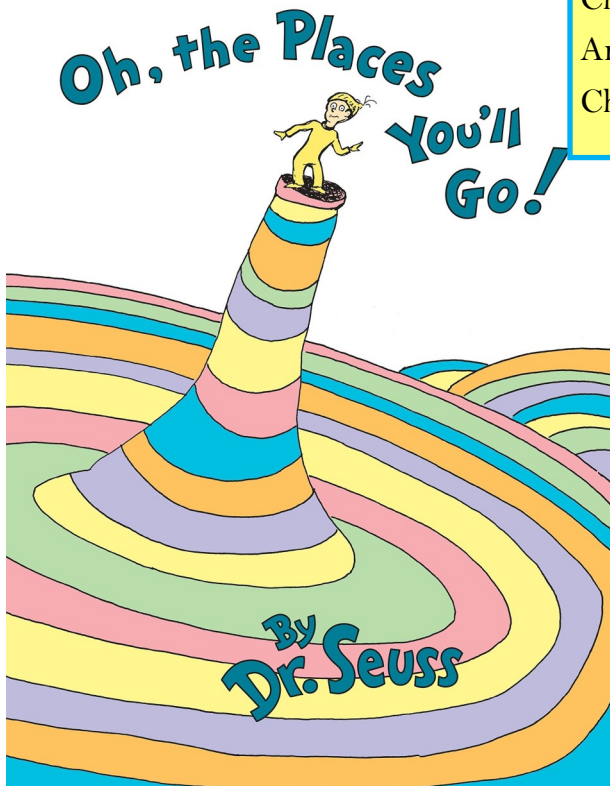
## LEAP PROGRAM

The LEAP Program is in it's second year of providing post high school students work and independent living experiences.

Carrie Dawes	Coordinator	7 years
Makenzie Merja	Coordinator	5 1/2 years
Jennifer St. Pierre	LEAP Staff	4 years
Samantha Sanders	LEAP Staff	1 year
Jake Metzenroth	LEAP Staff	1 year

# COTTAGE WINGS

There are currently 3 wings that residential students live in. Elementary and middle school girls reside in Geyser. High school girls reside in Shoshone. All boys reside in Obsidian. Cheri Luongo is the Counselor for all elementary and middle school students who reside in the cottage full or part time. Erin Faulkner is the Counselor for all of the high school students. Two staff are always on duty during the nights.



This year, MSDB has adopted the theme “Oh, the Places You’ll Go” as part of the strategic plan rolling out.

The staff in the cottage program view this as a philosophy of constant teaching in order to better prepare all our students for their future beyond MSDB.

## GEYSER COTTAGE

Amy Crachy	Lead Resident Advisor	20 years
Christine Lay	Resident Advisor	4 years
Amanda Taylor	Resident Advisor	3 years
Cheyenne Tucker	Resident Advisor	1½ years

## SHOSHONE COTTAGE

Dorothy Nutter	Lead RA	41 years
Seri Brammer	RA	5 years
Christine Lay	RA	3 years
Cheyenne Tucker	RA	1½ years

## OBSIDIAN COTTAGE

Bill Andrews	Lead RA	13 years
Teresa Leese	RA	22 years
AJ Kauffman	RA	4 years
Trevor Morse	RA	2 years

## Nightwatch

Wanda Sutinen	16years
Fran Aguon	13 years
Crystal Case	8 years



## LABOR DAY ACTIVITIES

Every year, the Labor Day weekend is full of fun! This year, students participated in activities both on campus (ice cream truck, games, movie, pizza party, outdoor water play, gym time) and in the community (open-captioned movie DC League of Super Pets, window shopping and ice cream, mini-golf.



### Outings/Activities

#### Weekly

- Goal Ball (Tues)
- EOS (Mon/Wed)
- Student Council (Wed)
- School Store (Wed/Fri)
- Flying Hooves (Thurs)
- Swimming (TBD)

#### Look what we did!

- Luminaria Walk (8/26)
- Pow-Wow (8.27)
- Labor Day Activities (9/3-9/5)
- Movie in activity room (9/9)
- Griz game (9/10)

#### Coming Soon-

- ILSP Wkshp: Bus schedules (9/19)
- LSP Wksp: Pharmacy shop (9/22)
- ILSP: Starting budget (9/29)
- Pumpkins for a Cause (10/1)
- ILSP Wkshp: TBD (10/6, 10/13)
- Watch student sports (TBD)
- Travel Home (10/19)
- Travel Return (10/23)



**Other activities this month included a Pow-Wow and a Luminaria Walk.**

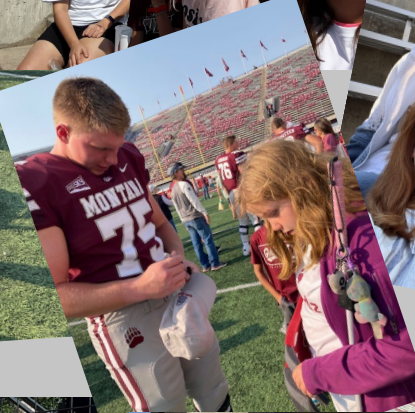
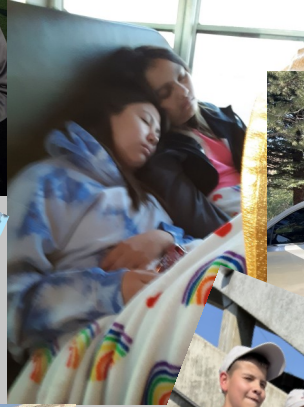






# GRIZ Game

## 24-7

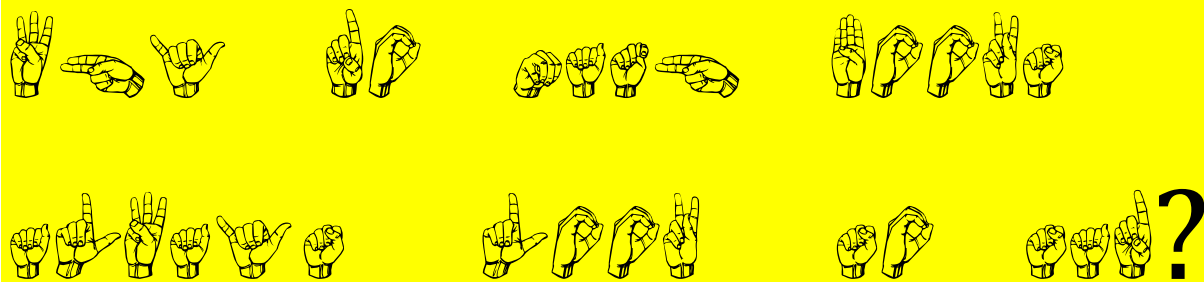
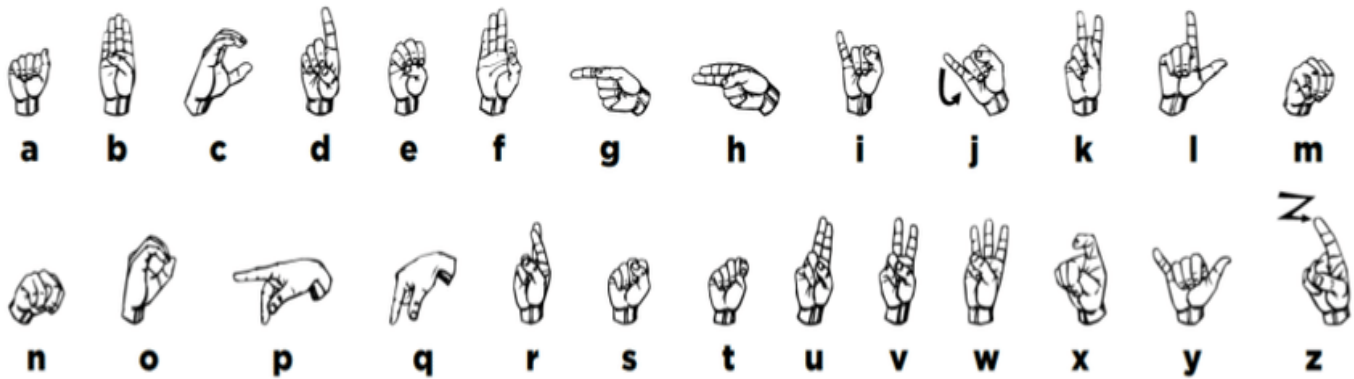




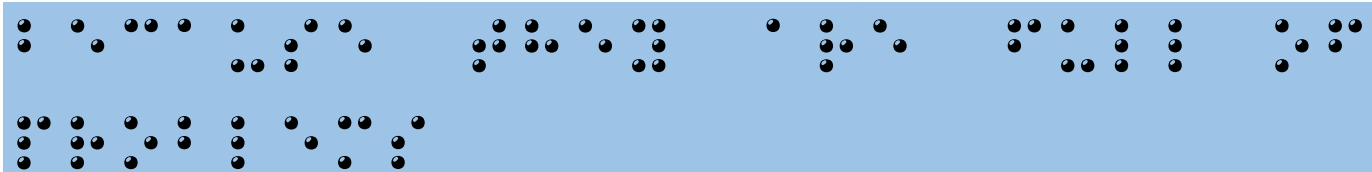
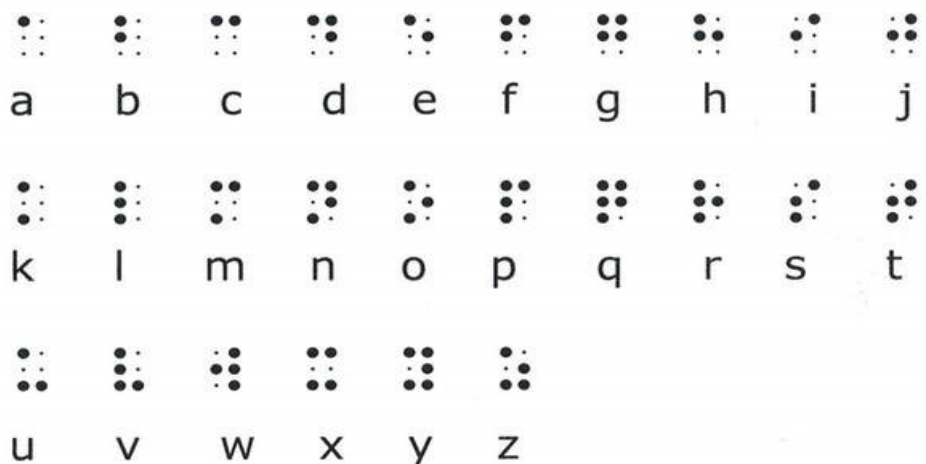
## PUZZLE PAGE

Decode the phrases using ASL Fingerspelling and Braille!

**Fingerspelling** is the process of spelling out words by using hand shapes that correspond to the letters of the word. A set of hand shapes used to spell words is known as a "manual alphabet."



**Braille** is a system that enables blind and visually impaired people to read and write through touch. It was devised by Louis Braille in 1821 and consists of raised dots arranged in "cells." A cell is made up of six dots that fit under the fingertips, arranged in two columns of three dots each.



### June 2022 Puzzler Answers:

Fingerspelling: What's black and white and red all over.

Braille: A zebra with a sunburn.