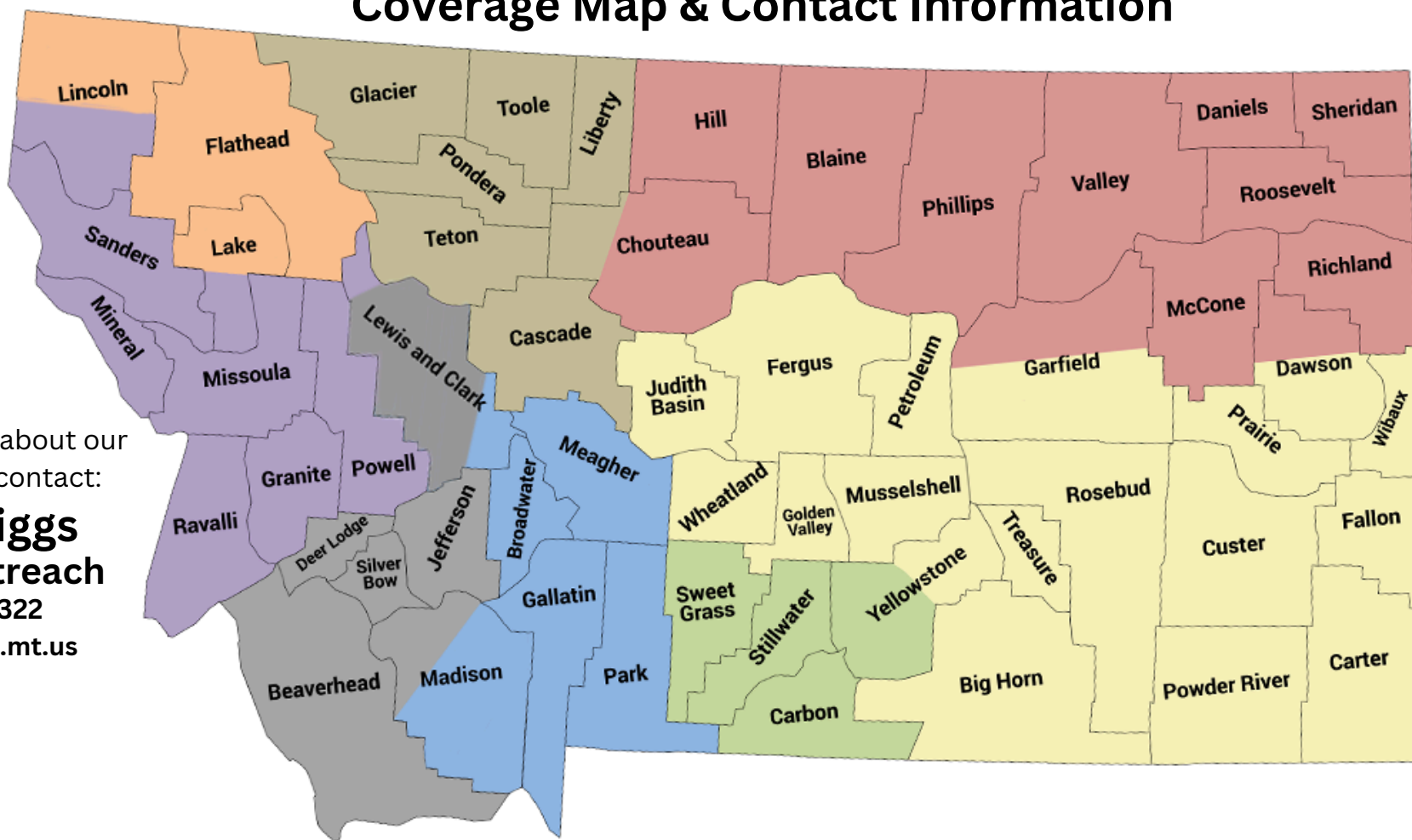




MSDB Visually Impaired Outreach Consultant Coverage Map & Contact Information



For more information about our
Outreach programs contact:

Miranda Briggs
Director of Outreach
Cell: 406-403-1322
mbriggs@msdb.k12.mt.us



**Heather
Hill**

Cell: 406-403-1004
hhill@msdb.k12.mt.us



**Michelle
Cross**

Cell: 406-788-3452
mcross@msdb.k12.mt.us



**Shawn
Erickson**

Cell: 406-471-0225
serickson@msdb.k12.mt.us



**Susan
Davis**

Cell: 406-670-3569
sdavis@msdb.k12.mt.us



**Barb
Peterson**

Cell: 406-544-7537
bpeterson@msdb.k12.mt.us



**Jenn
Norlander**

Cell: 406-468-4820
jnorlander@msdb.k12.mt.us



**Kerri
Norick**

Cell: 406-599-3176
knorick@msdb.k12.mt.us



**Kacie
Wilmot**

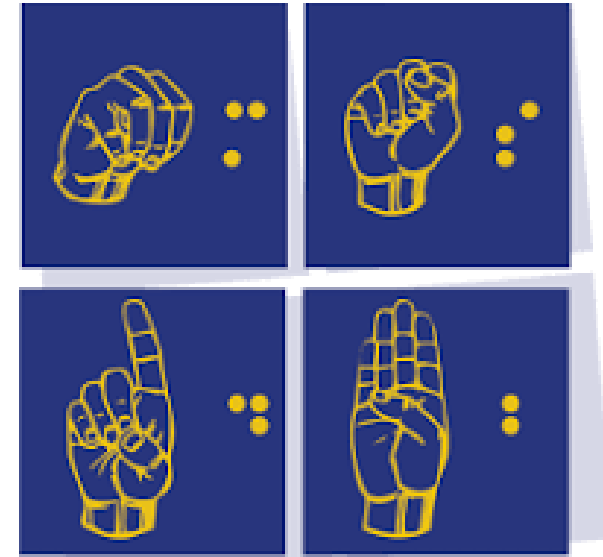
Cell: 406-629-0111
kwilmot@msdb.k12.mt.us

Services Offered:

- Serve as a resource for medical, early childhood centers & Eye Care Specialists
 - Help parents understand vision reports from Ophthalmologists or Optometrist
 - Help families establish home-based early education services through the Family Advisor program
 - Collaborate with other service providers to develop Individual Family Service Plans (IFSPs)
 - Provide home based consultative services
 - Provide trainings and technical assistance to promote appropriate intervention strategies and educational practices as part of an education team
 - Offer suggestions, recommendations and consultations to classroom teacher and specialists
 - Participate in education meetings (Reevaluations, Reevaluation meetings, IEP, 504, etc.)
 - Suggest or provide specialized instruction materials
 - Be available as an ongoing resource and support contact via phone and/or email
- Perform Functional Vision Assessments, Learning Media Assessments and assess Braille Literacy
 - Work with MSDB campus to facilitate appropriate referrals of students for visits, evaluation, and/or placement at MSDB
 - Provide in-service and trainings to schools, daycare centers, and other agencies serving blind/visually impaired children
 - Plan Family Learning Weekends (FLW) and Campus Enrichment Days (CED), then provide related information to families
 - Braille instruction training, Untangling the Dots, mentoring and support to local school district teams
 - Care about your blind/visually impaired child!!



Montana School for the Deaf and the Blind



**Lifting Students
Beyond Expectations**

Blind & Visually Impaired Outreach Services

**3911 Central Ave
Great Falls, MT 59405
Fax: 406-771-6164
www.msdbmustangs.org**